



Convenience Solutions

CUHACI  PETERSON®

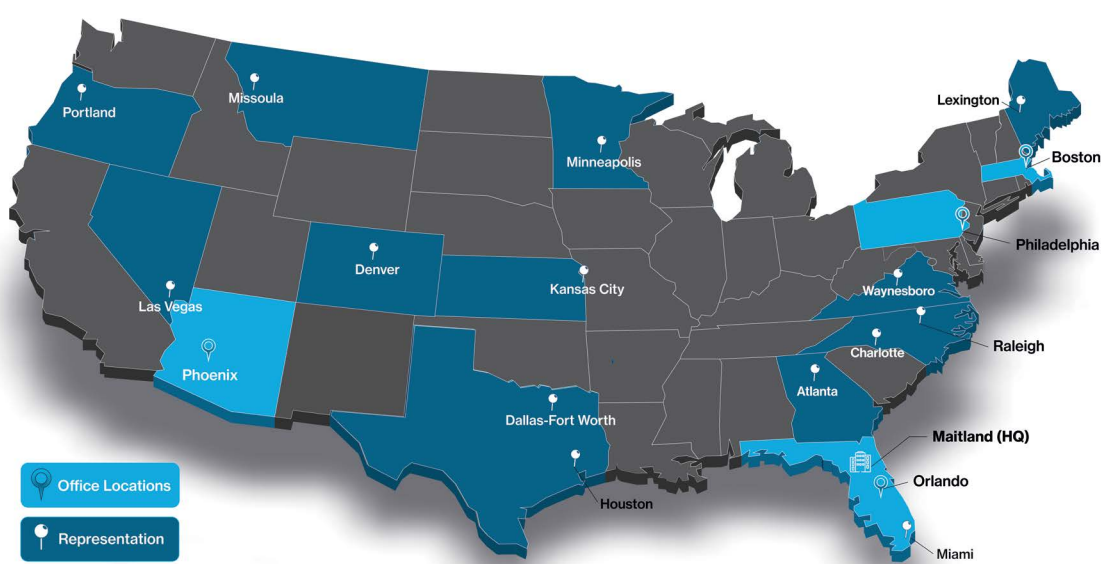
Cuhaci Peterson:

Your Partner in Convenience Design and Professional Services

Cuhaci Peterson is a professional commercial design firm intent on exceeding your expectations. What sets us apart is not what we do but how we do it. For more than 45 years, our daily focus has been making our clients successful. We believe in experiences that build relationships and trusted partnerships. While we take pride in our team, knowledge, collaboration and results, it is our personal connection with our clients that distinguishes us. We focus on listening to our clients, understanding their needs and creating solutions that enhance the built environment.

Our firm is driven by the diverse strengths and talents of our team. Our open and continuous communication ensures clients are clearly understood throughout our process. Through this approach, we deliver a unique, customized experience because our designs put objectives, missions and end-user needs first.

With an extensive history in designing grocery and retail, adapting our skill set to the convenience realm was a natural transition. CP's "Beyond Convenience" team acts as a full service extension of our clients' brands. From prototype design to multi-unit special project roll-outs, we take pride in being a go-to asset for our convenience clients.



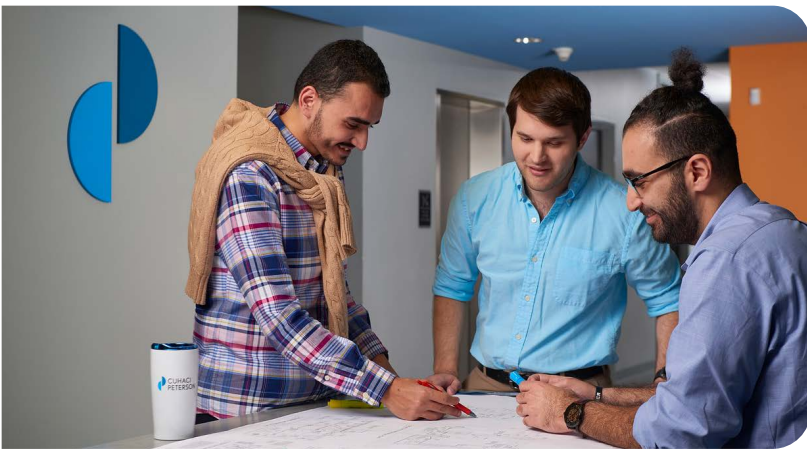
200+ Professionals

CUHACI PETERSON.

Registered in 50 States

Physical Spaces That Connect People and Create Value

At Cuhaci Peterson, our projects have lasting value long after we're out of the picture. We have an interconnected, supportive and collaborative team of trusted voices that all keep your best interest in mind. We are architects, designers, engineers and support staff that believe in delivering the best to our clients every step of the way.



Architecture

Although we've evolved since we began in 1978, architecture remains at the core of what we do. We have registered architects who are licensed to practice in 50 states plus Puerto Rico. Our architectural services can be part of a complete CP team approach or combined with both in-house and outside design consultants to provide the best approach.

Design

We have a wealth of experience in retail design and a variety of scales to meet any need. From conceptual and business design to interior architecture and visualization, we create with purpose and can develop any solution, including the details of door hardware. The CP team works with you to design projects that develop brand identity and establishes your aesthetic footprint in an impactful and meaningful way.





Engineering

Our engineering services includes structural, electrical, mechanical, fire protection and fire services. Our experienced and licensed team of multidisciplinary engineers ensures all considerations are addressed in a full-service approach that integrates them with the architectural group, resulting in a high-efficiency team. Our engineering teams use Revit to coordinate our drawings with other trades in our design and coordination occurs in real time.

Robust Services

From day one, our clients know they have a strong team behind them and one they can count on to lead every phase of the project. Our permitting services team helps with everything from preparing site investigation reports to delivering the permits. Our construction administration team is in-house and has more than 150 years-experience to ensure that final construction aligns with the contract documents. And providing that constant communication and the technical expertise to deliver projects on time and within budget are our project/program management professionals.



Nathan Griffis

Principal



 nathan.griffis@c-p.com

 www.linkedin.com/in/nathangriffis/

EDUCATION

AA, Business Administration and Management

Valencia College

AS, Architectural Drafting and CAD

Triangle Tech

HONORS & AFFILIATIONS

- ICSC - Innovating Commerce Serving Communities
- NACS - National Association of Convenience Stores

EXPERTISE

Convenience

Grocery

Restaurant

Retail

KEY CLIENT RELATIONSHIPS

7-Eleven

Circle K

Parker's Kitchen

Wawa

BIOGRAPHY

With more than 25 years of industry experience, Nathan Griffis assumes the role of Principal at Cuhaci Peterson. His primary focus lies in fostering long-term relationships, as he diligently manages multiple-unit programs for renowned brands in the convenience industry. Acting as a vital link between these brands and the firm's multidisciplinary teams, Nathan ensures seamless collaboration and effective project execution. His extensive background encompasses diverse areas such as client relations, account management, program development, leadership, project management and sales. Nathan has successfully led projects of varying sizes within the convenience, grocery, restaurant and retail sectors.

Nathan holds an associate degree in architectural computer-aided design and drafting (CADD) obtained from Triangle Tech. Currently, he is further expanding his knowledge and expertise through his enrollment at the University of Florida, where he is pursuing a Bachelor of Arts in Business Administration. In addition to his exceptional professional abilities, Nathan possesses a charismatic speaking style that captivates audiences. Furthermore, he has contributed his valuable insights as a published author, sharing his thought leadership with industry peers and beyond.

Wawa

Cuhaci Peterson worked with Wawa to develop its Florida store prototype design from a blank sheet of paper. Since 2010, our teams have opened more than 500 new Wawa stores in Florida and the Mid-Atlantic, as well as hundreds of special projects and renovations.

Our team maintains 13 building and 17 fuel canopy prototypes with several standard variations to each. We issue updated versions biannually and accommodate various prototypical owner initiatives throughout the year for incorporation into the site adapts as bulletins.

CP provides Wawa, Inc. with the following to date:

- 500+ site adapt projects
- 250+ remodel projects
- 8 tenant improvement projects
- Various special projects
- Managed all building, fuel canopy, trash compound prototypes
- Approximately 50 revision bulletins annually

At the peak in 2017, as Wawa ramped up toward the initiative of having 1,000 stores. Their aggressive growth in the state was supported by CP's in-house permitting team, which worked diligently with local jurisdictions to stay on schedule and help achieve important milestones for new store openings.

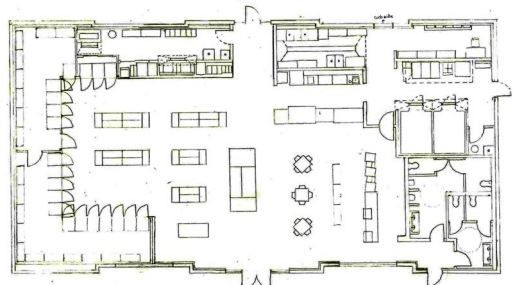
As Wawa has grown with us, we have grown with them. Partnering with our client, we restructured our team to accommodate an increased workload, while ensuring we are able to maintain the pace and high-quality results they have come to expect from us. To better serve the needs of our client, Cuhaci Peterson established a Philadelphia office with the acquisition of LMA Architects in 2013.



Services:

Construction Administration,
Construction Documents,
Design Development, Electrical,
Fire Protection, Mechanical,
Plumbing, and Structural
Engineering, Schematic Design,
Permitting Services, Program
and Project Management,
Visualization





Parker's Floor Plan - Option 3



Services:

Design Development, Fixture Planning, Schematic Design, Construction Documents, Electrical, Fire Protection, Mechanical, Plumbing, and Structural Engineering, Permitting Services, Program and Project Management, Visualization, Prototype Design and Maintenance

Parker's Kitchen

In our first meeting with Parker's Kitchen, we discussed a variety of ways in which we could grow their program, but one that particularly resonated was CP's awareness of scale. At the time, they were building a handful of stores per year and had the desire to get into building more than 20 stores per year.

CP began creating prototypes and processes across the board, not only in drawings but also in documenting and communicating with partners. The goal was to structure this program to be consistent while avoiding big headaches as the program grew. We created small, medium and large prototype versions of Parker's Kitchen. This systematic structuring enabled Parker's Kitchen to plan ahead, providing a new outlook on buying power and cost savings. For example, pricing steel packages or rooftop equipment for a year, instead of just a few projects. This gave Parker's Kitchen a clear view of their projects from concept development to ground up.

Parker's Kitchen has smaller stores in rural areas where implemented smaller prototypes while adjusting the exterior of the building to provide the most cost-effective solutions. We also offered custom, larger prototypes for their bigger stores. Variables can change, like contractors, regions or states but the customer experience must stay the same, with the goal being to deliver the same end product.

Since we began the program in 2021, we have worked on more than 30 new stores and remodels, delivering four prototypes plus mirrored versions. These prototypes have become the starting point of dozens of site-adapts and have established foundation for every Parker's development. In the end, it was CP's willingness to listen to what is important to Parker's Kitchen, understanding what is non-negotiable and use expertise and knowledge, such as regional influences, jurisdictions and design tenets to make the program scalable and effective.



7-Eleven

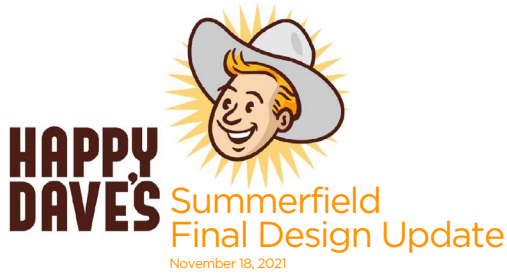
7-Eleven is by far the largest convenience-store chain, but if you think you know everything about them, think again. Cuhaci Peterson's Beyond Convenience team has had the privilege of assisting the Texas-based company on a number of interesting projects. Over the years we have worked with a variety of developers and 7-Eleven 3rd party representatives to add or remodel 100+ locations to their ever-expanding footprint. Unlike many of our other national roll-out clients, 7-Eleven does not operate with a pure prototype which makes each location an individual project.

From historic gems to state-of-the-art facilities that defy expectations, the thing that our Beyond Convenience team is most proud of building is relationships with fantastic client-partners like 7-Eleven. Over the years Cuhaci Peterson has worked on 100+ projects with them and look forward to many more in the future.



Services:

Construction Administration,
Construction Documents, Design
Development, Mechanical,
Electrical, Plumbing and
Structural Engineering and Zoning
Coordination, Schematic Design,
Permitting Services



Happy Dave's

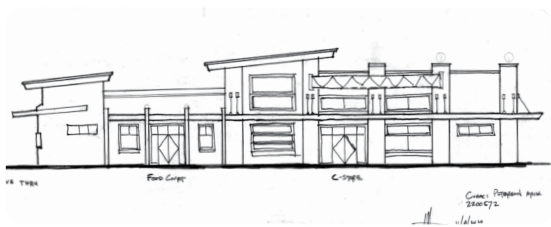
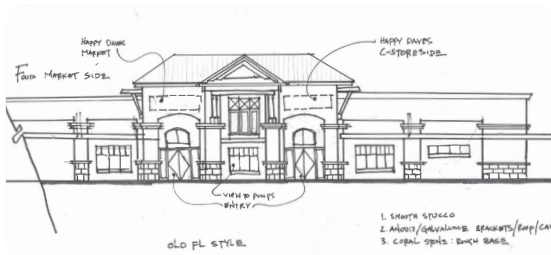
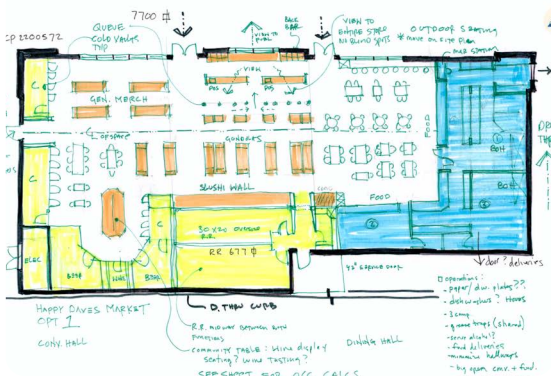
Happy Dave's, a convenience store in Summerfield, FL, came to Cuhaci Peterson via our long-standing relationship with a previous CP employee and his firm, MEC General Contractors, to produce a white paper prototype design from scratch.

The concept incorporated a restaurant, convenience store, donut shop and drive through, making it difficult to define the company's sector which impacts the occupancy load, codes and overall design. CP was able to guide our client through the process while coordinating with consultants to ensure the project met its deadline.

The design featured kiosks in the middle of the store for sandwiches and cold beverages. It was also important to this customer that larger than normal bathrooms were installed to accommodate additional clientele. Other items incorporated into the design were areas for general merchandise, coolers, beer coolers, a humidor and back of house equipment.

The project came together through a hand sketch that led to a floor plan and finally, a rendered image. At times, the project was complicated such as getting the proper equipment, elevation work and code research, all ahead of the design and process. Once again, CP led the client through a challenging process, and the result was a satisfied client and a successful project.

As a result, Happy Dave's is now moving forward with CP's prototype, using it for additional new stores.



Services:

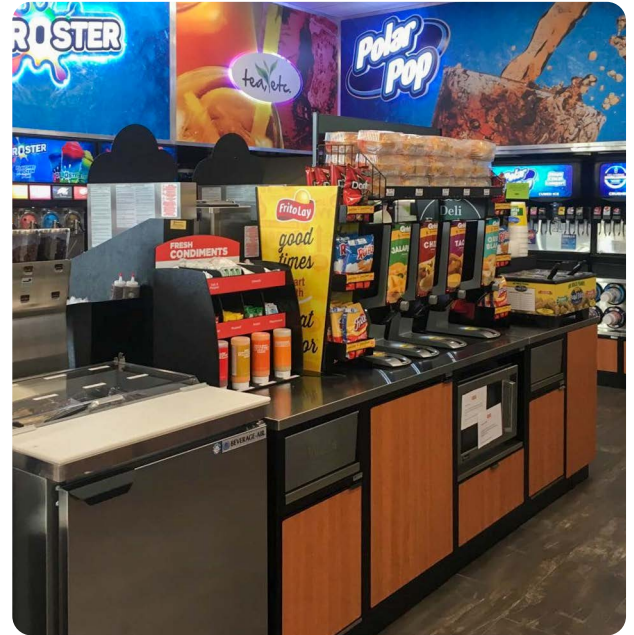
Design, Architecture, Electrical and Mechanical Engineering, Project Management, Prototype Development





Circle K

Cuhaci Peterson has offered numerous services to Circle K's Southeast business units for its development plans. We have successfully worked with multiple levels of management, both internally and externally, including development programs through their industry partners.



Services:

Construction Documents, Design Development, Due Diligence Services, Electrical, Fire Protection, Mechanical, Plumbing, and Structural Engineering, Fixture Plan Design, Permitting Services, Visualization





CUHACI  PETERSON®

This publication is the copyrighted property of Cuhaci Peterson ©2023. All rights reserved.

